



ROCK FACE SPLASH BLOCK

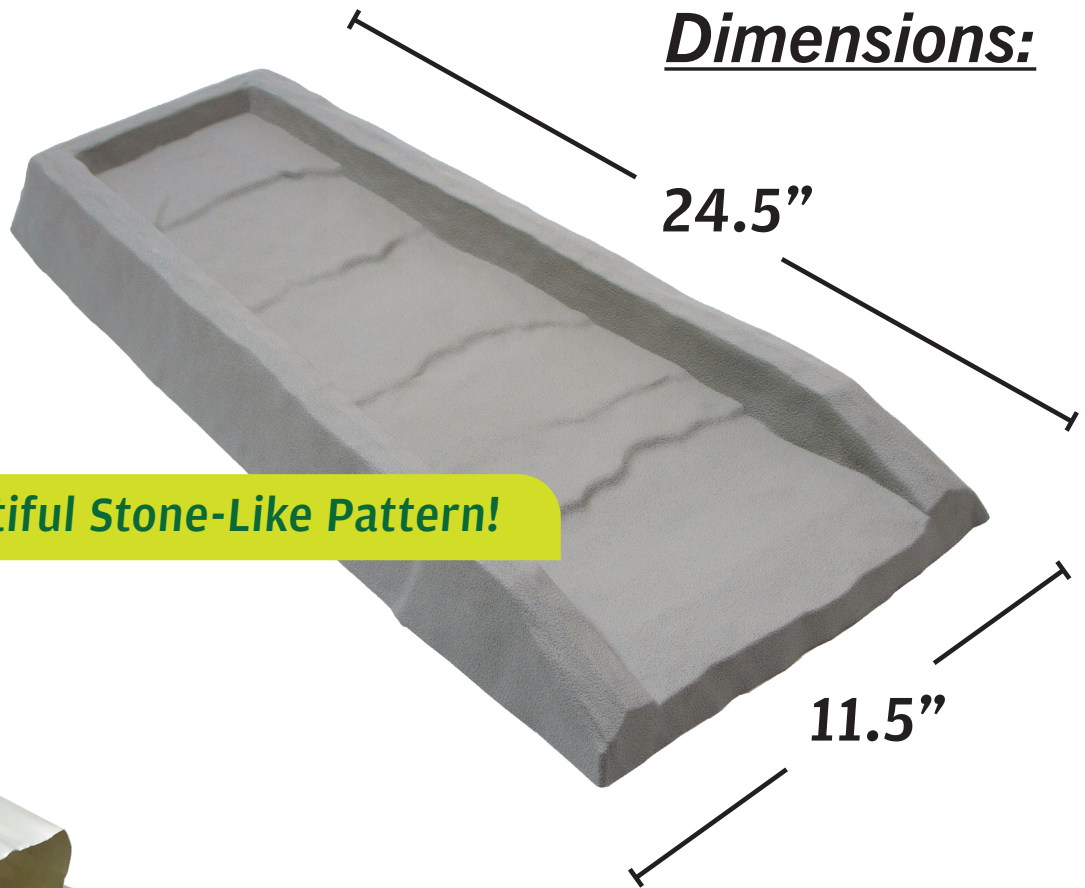
INSTALL GUIDE

Splash block helps direct water away from your home's foundation

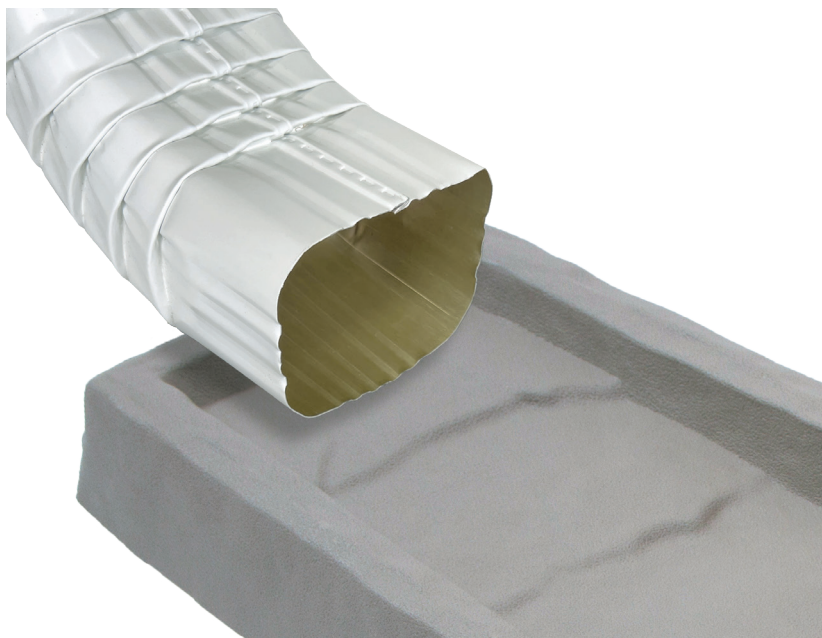


**DIRECTS
DOWNSPOUT
RUNOFF!**

Dimensions:



Featuring a Beautiful Stone-Like Pattern!



Installation:

Place the splash block underneath the gutter downspout elbow.



MADE IN USA
FROM RECYCLED MATERIALS

Questions/Comments? Email us at:
CustomerService@AvonPlastics.com

